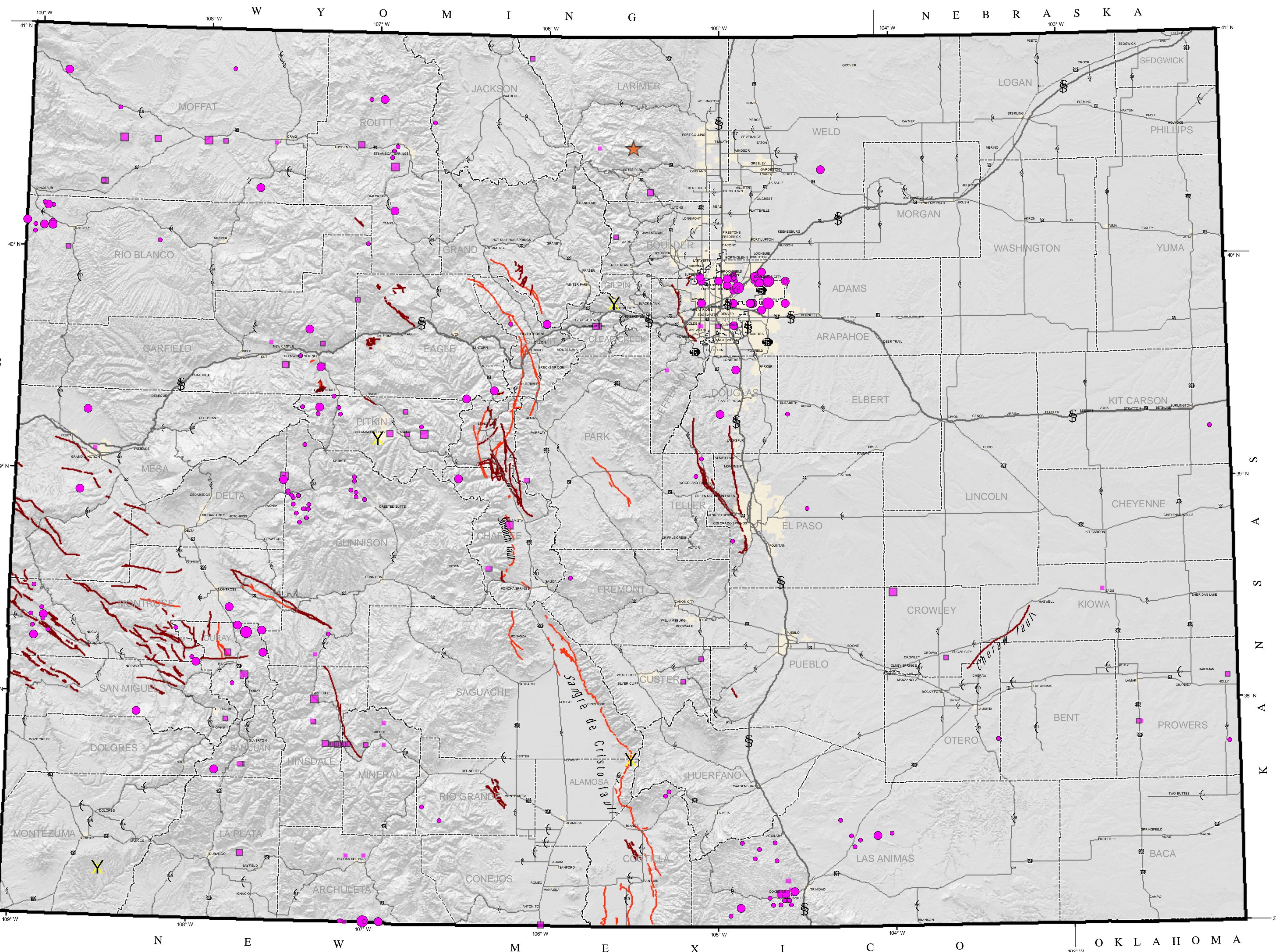


COLORADO'S EARTHQUAKE and FAULT MAP

Showing Locations of Historical Earthquakes and Known or Suspected Geologically Young Faults



EARTHQUAKE EPICENTERS

Instrumentally located epicenters (~1962 to 2006)
Size of dot indicates magnitude.

- 5-5.5
- 4-4.9
- 3-3.9

Approximate location of pre-instrumental earthquake epicenters (~1867 to 1961). Square size indicates the maximum Modified Mercalli intensity for the earthquake (see back of map for intensity scale).

- VII
- VI
- V
- IV
- I-III

▲ 1882 Earthquake; magnitude estimated at 6.6 +/- 0.6 (Spence and others, 1996)

QUATERNARY FAULTS

Geologically young faults that displace sediments or rocks deposited during the Quaternary Period (approximately past 2 million years).

- Known or suspected fault displacement of late Quaternary deposits (approximately past 130,000 years)
- Known or suspected fault displacement of middle to early Quaternary deposits (approximately past 130,000 to 2 million years old)

X Permanent Seismic Stations - Includes four seismographs currently operated by the U.S. Geological Survey as part of the Advanced National Seismic System.

■ Cities and Towns

DATA SOURCES

Earthquake epicenters:
U.S. Geological Survey; Colorado Geological Survey; Kirkham and others, 2004; Kirkham and Rogers, 2000
Faults: Colorado Geological Survey; Widmann and others, 1998
Seismic Stations:
U.S. Geological Survey

This map does not meet U.S. National Map Accuracy Standards and is intended for general reference only.

Scale 1:1,150,000

