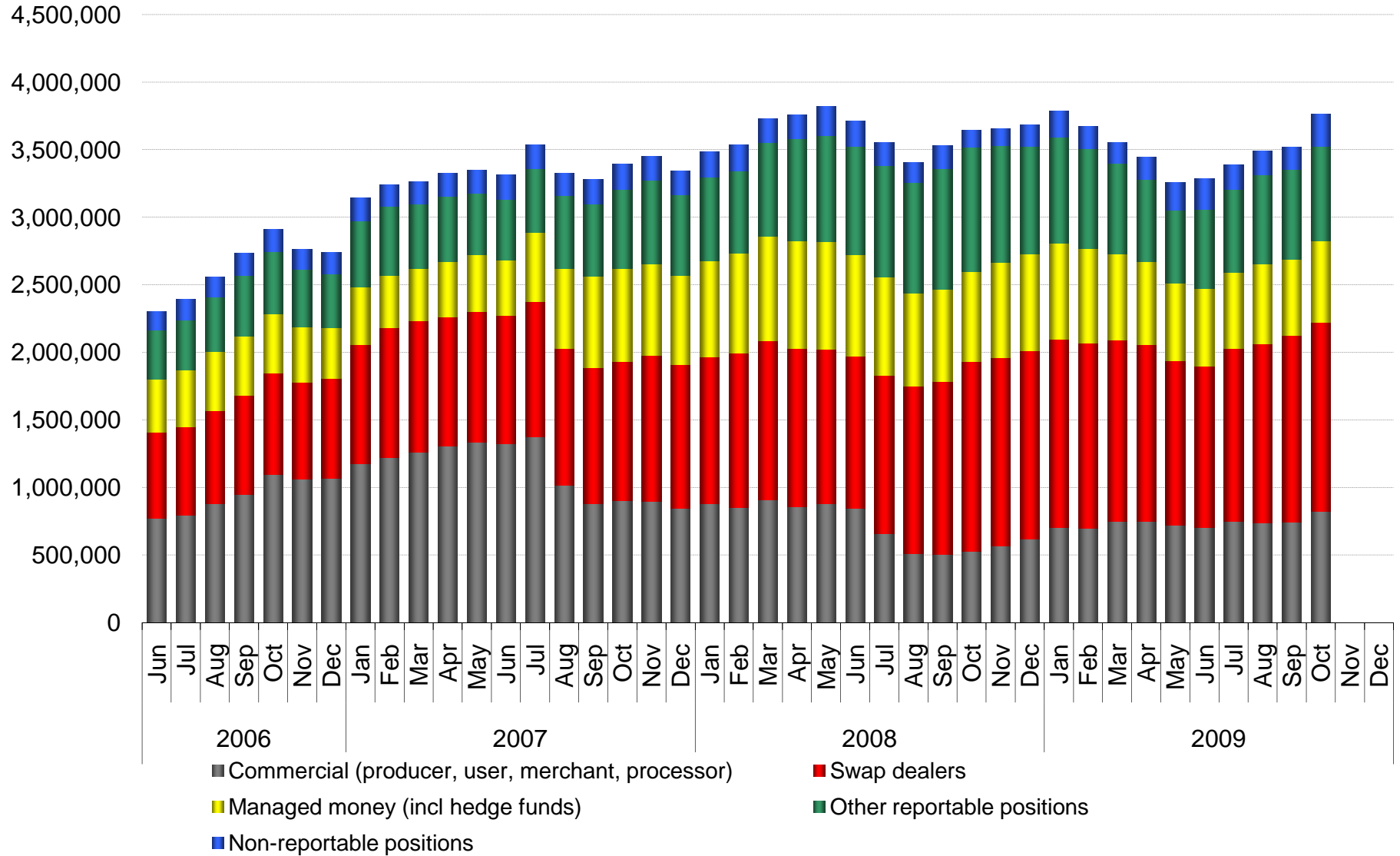
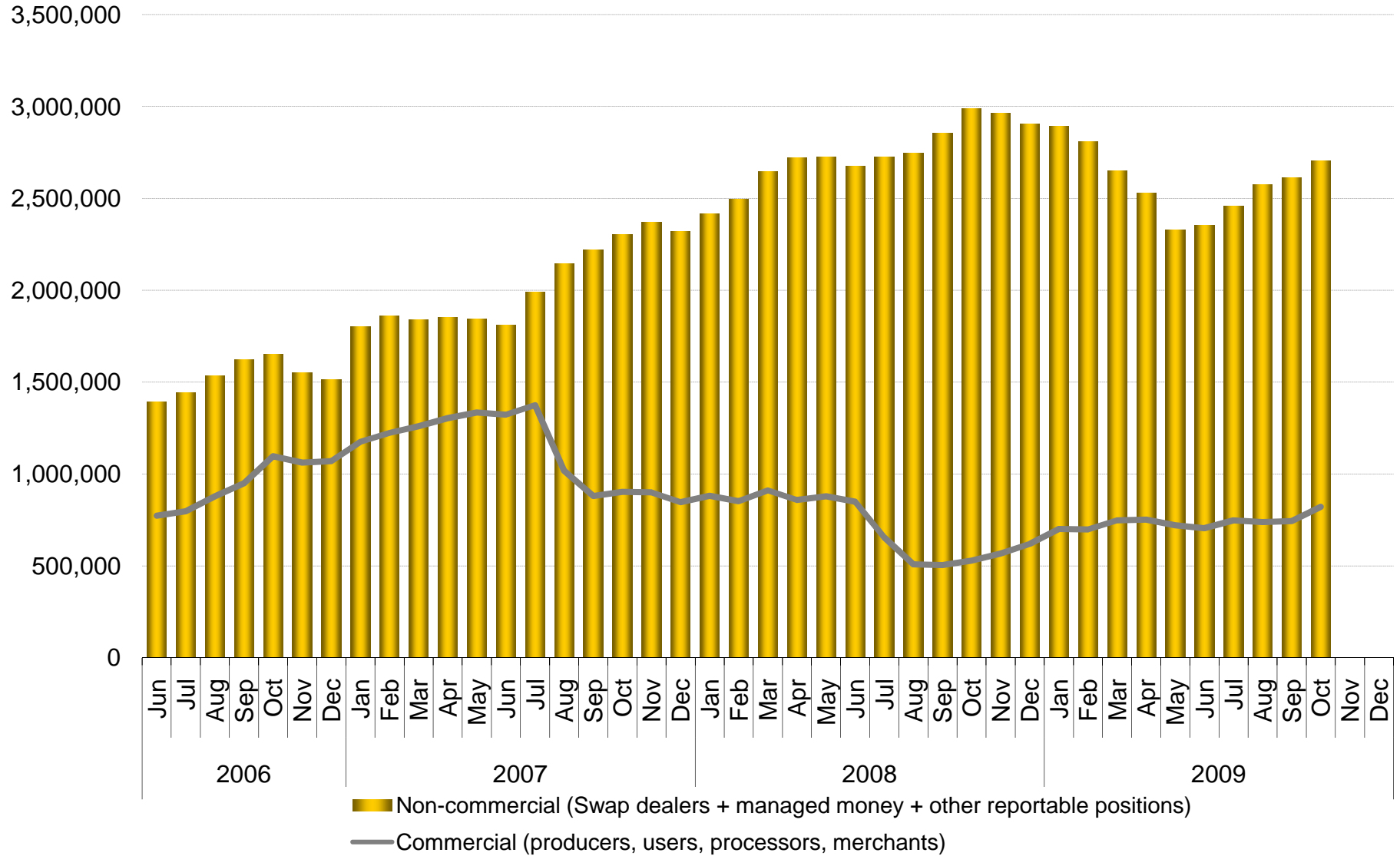


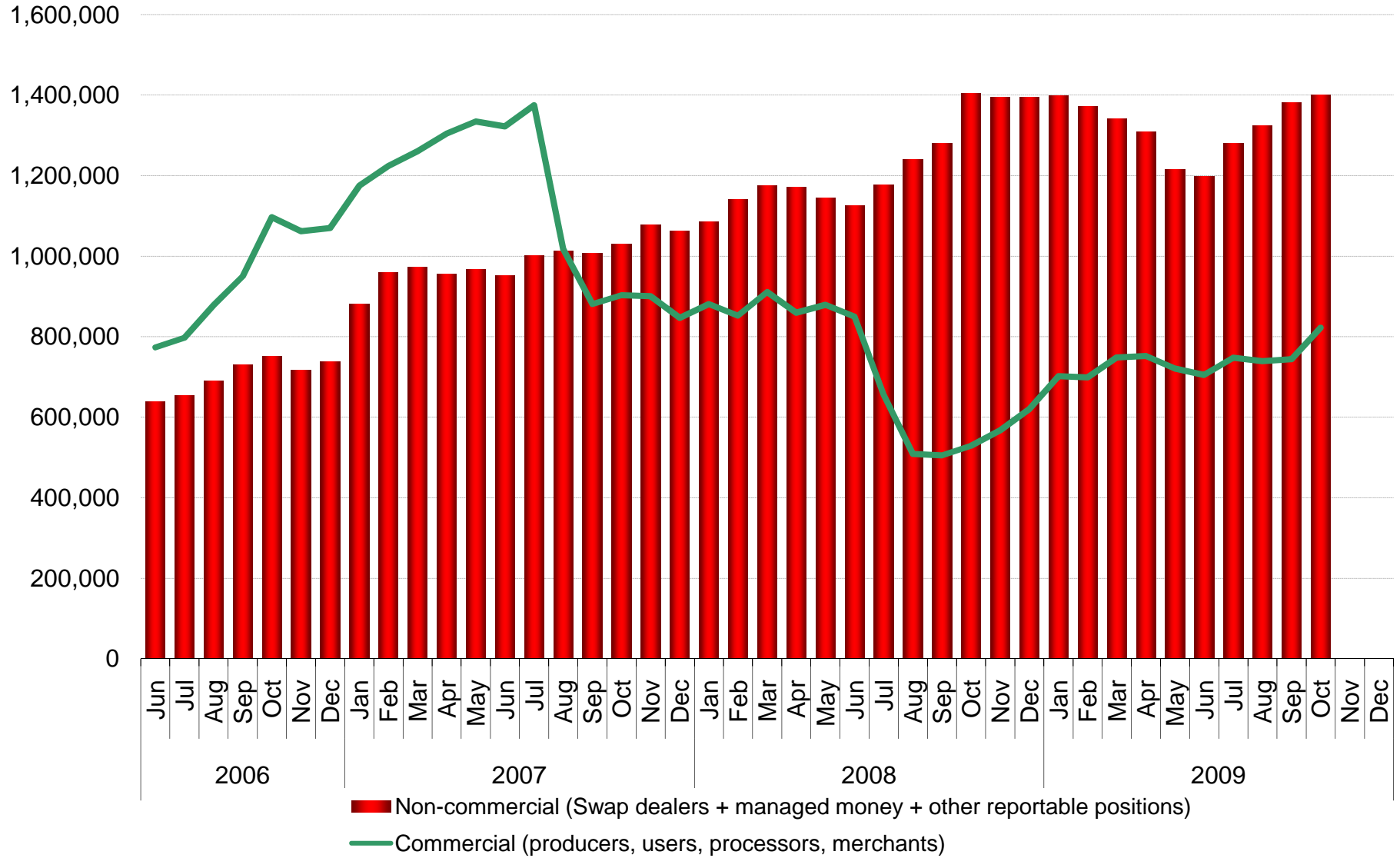
**NYMEX WTI: DISAGGREGATED POSITIONS BY TYPE**  
**NUMBER OF CONTRACTS HELD (EACH FOR 1,000 BBL)**



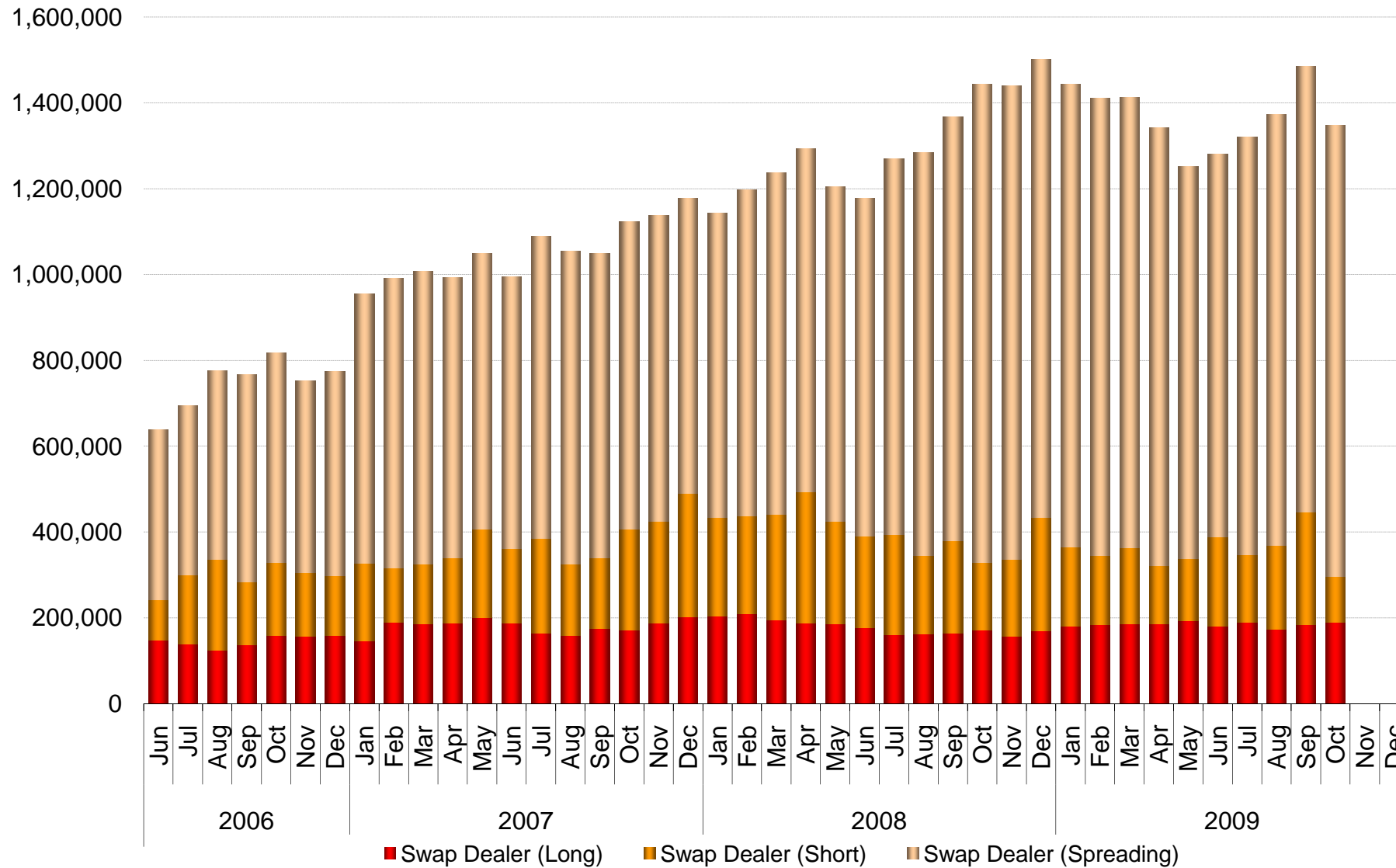
**NYMEX WTI: NON-COMMERCIAL POSITIONS (SWAP+MANAGED MONEY+OTHER)  
NUMBER OF CONTRACTS HELD**



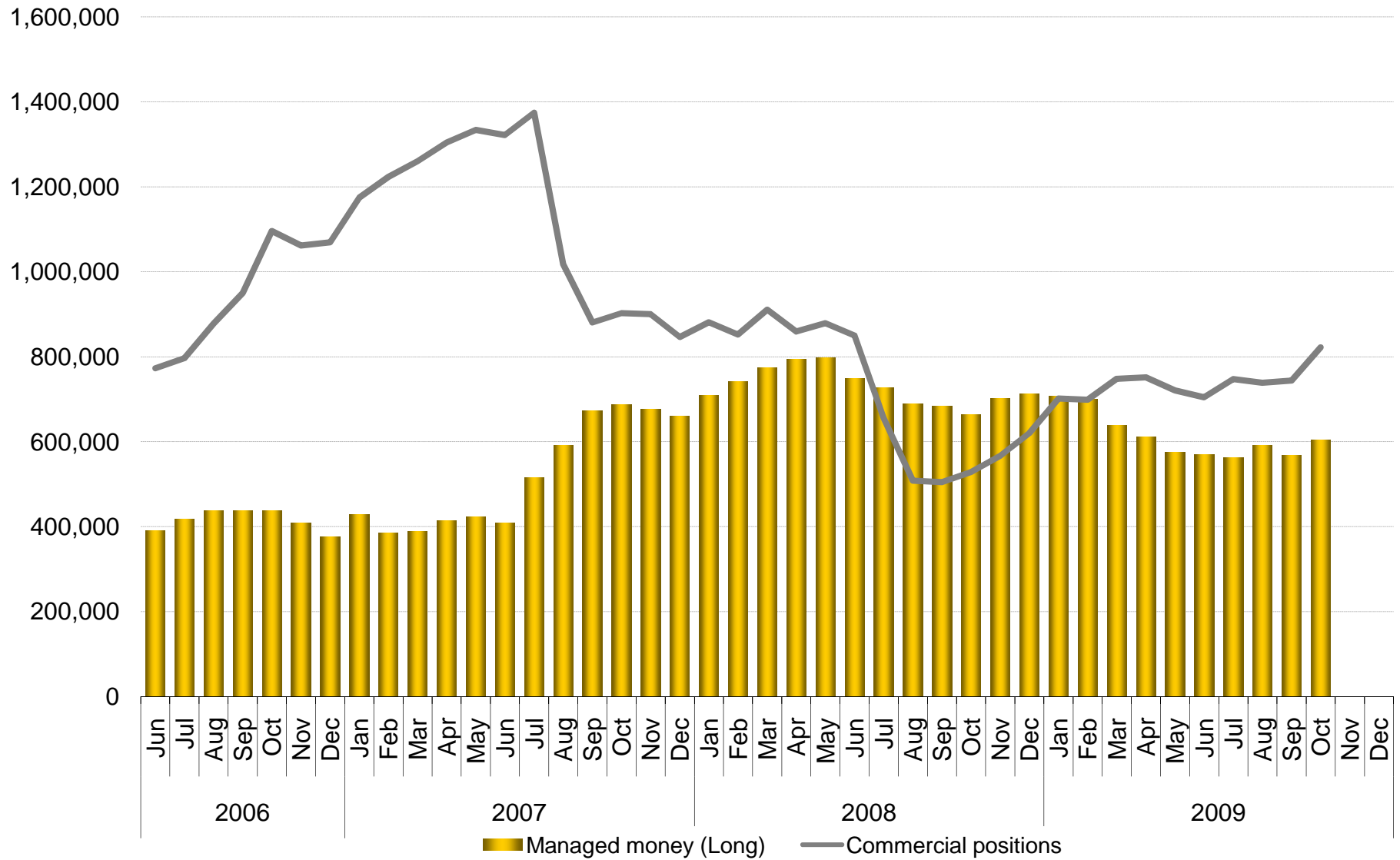
**NYMEX WTI: SWAP DEALER POSITIONS**  
**NUMBER OF CONTRACTS HELD**



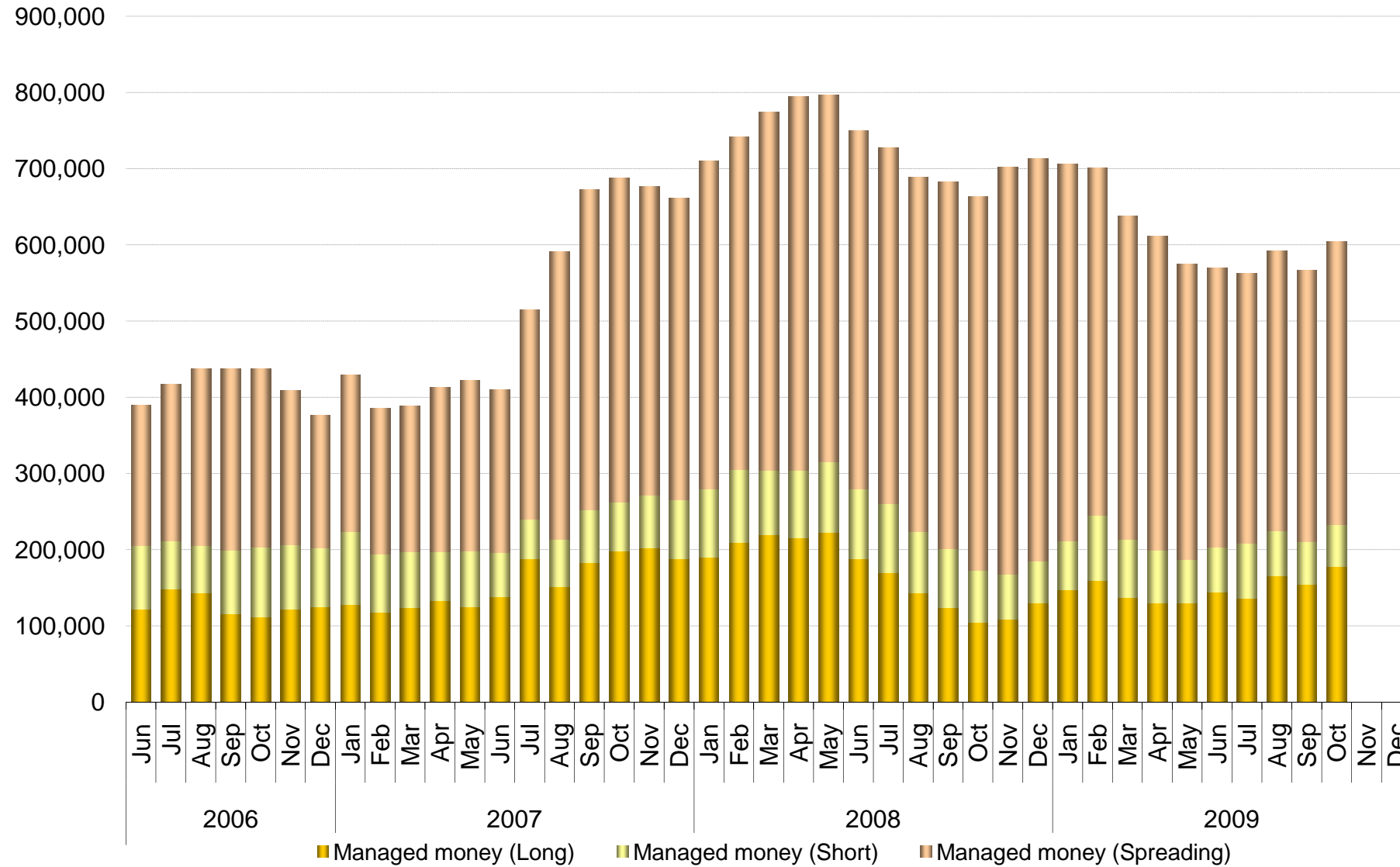
**NYMEX WTI: SWAP DEALER POSITIONS BY TYPE**  
**NUMBER OF CONTRACTS HELD**



**NYMEX WTI: MANAGED MONEY POSITIONS  
NUMBER OF CONTRACTS HELD**



**NYMEX WTI: MANAGED MONEY POSITIONS BY TYPE  
NUMBER OF CONTRACTS HELD**



REUTERS

NYMEX WTI: COMBINED FUTURES AND (DELTA-ADJUSTED) OPTION POSITIONS -- MONTHLY AVERAGES

Contracts (1000 bbl)		Reported Positions				Non-reportable	Aggregate Non-commercial	Swap Dealer Positions			Managed Money Positions			
		Commercial	Swap dealer	Money manager	Other			Long	Short	Spreading	Long	Short	Spreading	
2006	Jun	772,988	638,998	390,057	365,501	134,049	1,394,556	149,061	93,674	396,263	122,021	83,025	185,011	
	Jul	796,910	653,691	417,509	372,511	151,469	1,443,711	138,629	160,950	394,350	148,946	62,239	206,324	
	Aug	878,481	690,715	437,925	406,308	144,359	1,534,948	124,588	212,060	438,891	143,154	62,190	232,582	
	Sep	949,977	731,201	437,194	452,903	165,828	1,621,297	137,410	145,948	484,330	115,999	83,606	237,590	
	Oct	1,096,246	750,423	438,080	461,605	164,808	1,650,108	158,447	170,633	489,597	112,000	91,453	234,627	
	Nov	1,061,957	716,216	408,827	425,579	149,343	1,550,621	158,044	146,695	448,151	122,257	84,187	202,382	
	Dec	1,069,345	738,508	376,508	398,065	156,934	1,513,081	158,108	141,164	474,528	125,218	77,714	173,577	
2007	Jan	1,174,874	882,163	429,059	490,368	171,170	1,801,591	145,642	182,056	627,288	127,967	95,885	205,207	
	Feb	1,223,718	959,240	385,321	515,603	157,458	1,860,165	189,458	127,842	673,900	118,208	76,047	191,067	
	Mar	1,260,222	972,455	388,518	477,595	165,247	1,838,568	186,065	139,244	681,956	123,802	72,997	191,720	
	Apr	1,304,366	955,525	413,592	484,776	168,214	1,853,892	187,537	152,649	653,501	133,181	64,345	216,066	
	May	1,334,100	966,440	422,414	456,854	170,882	1,845,708	201,113	205,393	642,092	124,797	73,788	223,828	
	Jun	1,321,954	951,476	409,908	449,298	179,594	1,810,682	188,051	173,281	633,465	138,070	58,663	213,176	
	Jul	1,374,602	1,000,461	515,284	472,085	173,450	1,987,829	165,125	219,831	703,437	188,424	52,018	274,841	
	Aug	1,017,863	1,012,984	591,809	540,299	164,426	2,145,092	158,460	166,929	729,328	151,517	62,494	377,799	
	Sep	880,833	1,007,946	673,082	537,128	181,768	2,218,156	175,325	164,915	708,935	183,525	68,283	421,274	
	Oct	902,585	1,029,757	688,278	585,429	188,853	2,303,465	172,384	233,718	717,143	198,849	63,084	426,345	
	Nov	900,482	1,078,534	676,904	616,457	179,273	2,371,895	187,970	238,177	711,931	202,294	69,102	405,509	
	Dec	846,651	1,062,032	660,970	596,916	175,897	2,319,917	201,914	288,885	686,786	188,527	77,507	394,935	
2008	Jan	881,011	1,086,533	709,954	621,091	184,808	2,417,578	204,695	229,936	709,387	190,211	90,016	429,726	
	Feb	852,203	1,140,748	741,687	610,958	189,285	2,493,393	210,793	226,781	759,869	209,849	95,947	435,891	
	Mar	910,759	1,175,893	774,875	694,471	174,199	2,645,238	195,157	245,669	796,484	219,882	84,786	470,207	
	Apr	859,513	1,171,258	795,097	756,102	175,794	2,722,457	187,640	305,727	800,181	215,982	88,097	491,019	
	May	879,094	1,145,515	797,382	783,538	217,823	2,726,435	185,524	240,489	779,625	222,657	92,591	482,134	
	Jun	849,801	1,125,281	749,592	801,359	187,725	2,676,232	178,295	212,307	787,756	188,088	91,314	470,190	
	Jul	655,809	1,176,490	727,915	821,416	173,554	2,725,821	160,404	233,253	876,134	170,187	90,415	467,313	
	Aug	508,474	1,239,795	689,056	819,782	147,150	2,748,633	163,630	181,395	940,119	143,677	80,741	464,638	
	Sep	504,874	1,281,535	682,816	890,377	172,916	2,854,728	164,463	216,459	987,197	123,723	78,127	480,966	
	Oct	528,782	1,404,140	663,753	922,549	126,673	2,990,441	171,948	157,112	1,114,358	104,718	68,064	490,971	
	Nov	567,061	1,395,765	702,140	863,729	130,035	2,961,634	156,617	180,052	1,104,109	109,227	58,655	534,259	
	Dec	619,866	1,395,269	712,984	796,630	162,541	2,904,883	169,290	265,306	1,066,796	130,257	54,538	528,188	
2009	Jan	701,860	1,398,505	706,818	785,234	195,168	2,890,556	181,010	184,721	1,078,955	147,243	64,408	495,167	
	Feb	698,887	1,371,626	700,987	738,044	160,649	2,810,657	185,162	159,753	1,066,649	159,362	85,880	455,745	
	Mar	747,939	1,342,215	638,025	671,467	155,749	2,651,708	186,387	176,568	1,049,887	137,568	76,522	423,935	
	Apr	751,828	1,308,979	611,854	609,250	164,689	2,530,083	185,817	136,736	1,020,610	130,017	69,602	412,236	
	May	720,697	1,216,172	574,679	540,262	207,154	2,331,113	193,507	145,185	913,776	130,455	56,921	387,303	
	Jun	704,692	1,197,250	569,625	586,564	227,262	2,353,439	181,122	208,102	891,267	144,923	58,102	366,601	
	Jul	747,427	1,281,430	562,326	613,974	182,265	2,457,730	189,331	157,269	974,147	136,420	72,090	353,817	
	Aug	739,067	1,324,698	592,027	658,225	176,682	2,574,950	173,864	195,148	1,004,473	165,701	58,760	367,566	
	Sep	744,008	1,380,710	567,218	663,093	162,911	2,611,021	183,604	262,857	1,039,392	154,146	56,652	356,420	
	Oct	822,014	1,400,565	604,066	698,752	238,769	2,703,382	189,217	106,719	1,051,270	177,847	54,896	371,323	
	Nov	#N/A	#N/A	#N/A	#N/A	#N/A	#N/A	#N/A	#N/A	#N/A	#N/A	#N/A	#N/A	#N/A
	Dec	#N/A	#N/A	#N/A	#N/A	#N/A	#N/A	#N/A	#N/A	#N/A	#N/A	#N/A	#N/A	#N/A